

## 2.13" Azumo Dev Kit Quick Start Guide

### Kit Components

This Guide

USB Cable

FLP Dev Kit Board

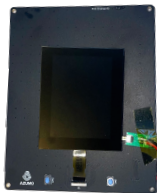
### Quick Start Procedure

- Connect the supplied USB cable into the board's Micro USB Connector.
- Connect the other end of USB cable to a USB power supply.
  - (Computer, USB hub, or smartphone charger)
- The display will start up and go through the pre-recorded image sequence.
- Toggle the LED on and off by pressing the Front Light button.
- Images can be skipped manually using the "Toggle" button.

#### Notes:

- The optical surface underneath **the protective film is very delicate and will be permanently marked by fingerprints.** Use care when removing it with the blue pull tab.
- Only handle dev kit from the edges of the PCB.
- Do not touch or put pressure on top edge where film rolls from back to Front of the LCD.
- Schematics and source code available upon request.

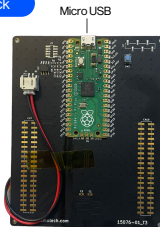
Front



Front Light  
On/Off

Toggle  
Back/Next

Back



Displays used in development kits ARE NOT suitable for environmental testing.

Please purchase production parts through Azumo or an authorized reseller.



Dev Kit  
Tutorial



Visit Our  
Website



Download  
Control Software

